

Release Notes

ControlLogix ControlNet Interface Module, Firmware Revision 20.009

Catalog Numbers 1756-CN2, 1756-CN2R, Series B

About This Publication

These release notes provide software compatibility requirements and other usage considerations for these modules. You should also use the following documents with your modules.

Resource	Description
ControlLogix ControlNet Interface Module Installation Instructions, publication 1756-IN607	Information about how to install your modules.
ControlNet Modules in Logix5000 Control Systems User Manual, publication CNET-UM001	Information about how to use your modules after installation.

View or download these publications at <http://literature.rockwellautomation.com>.

Required System Components

To use the 1756-CN2 and 1756-CN2R modules, you need the correct versions of RSLogix 5000 programming software and RSLinx Classic software.

Software	Compatible Version
RSLogix 5000	16.0 or later
RSLinx Classic	2.51 or later

Enhancements

The 1756-CN2 and 1756-CN2R modules use a USB serial interface instead of a network access port (NAP) interface.

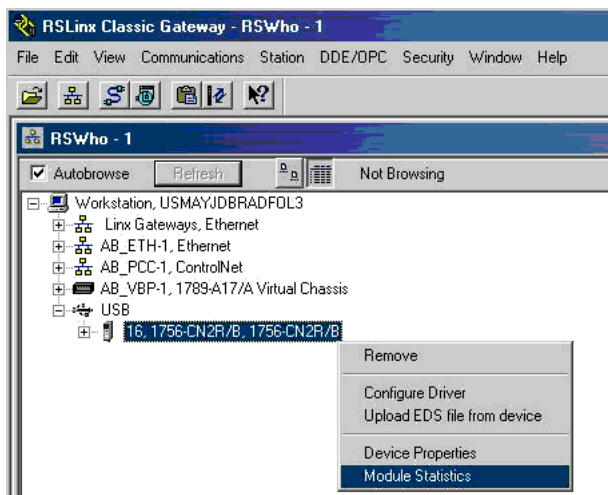
Module Usage Recommendations

When you use these modules, do not flash upgrade the firmware for more than one module simultaneously through the USB port.

Number of Connections

The module supports a maximum of 131 connections. However, 3 of the 131 connections are always reserved for redundant control. Therefore, 128 connections are available for standard use. Since the connections are reserved, they will always appear in use even when no connections are open.

To access the connection information, right-click the module in the RSWho window of RSLinx Classic software.



The Connection Manager tab contains the connection information.

The screenshot shows the 'USB16 1756-CN2R Statistics' dialog box with the 'Connection Manager' tab selected. The 'Statistics' section contains a table with the following data:

	Requots	Format Rejects	Resource Rejects	Other Rejects	Connection Timeouts
Open	4	0	0	2	1
Close	1	0		0	

The 'Connection Statistics' section shows:

Total Connections	131	0	131
Connections Used	3		

The 'Buffer Statistics' section shows:

Max Buffer Size	0	0	0
Size Remaining	0		

The 'CPU Statistics' section shows:

CPU Utilization	0.1%	U	100
-----------------	------	---	-----

Annotations with arrows point to the 'Connections Used' field (value 3) and the 'Size Remaining' field (value 0), stating: 'No connections open (subtract 3 from displayed value).', and 'No buffer information is displayed. The module has no buffer usage restrictions.' At the bottom, there are buttons for 'Reset Counters', 'Lock Counters', 'OK', 'Cancel', 'Apply', and 'Help'.

ControlLogix, RSLinx Classic, RSLogix 5000, Logix5000, Allen-Bradley, and Rockwell Automation are trademarks of Rockwell Automation, Inc.

Trademarks not belonging to Rockwell Automation are property of their respective companies.

www.rockwellautomation.com

Power, Control and Information Solutions Headquarters

Americas: Rockwell Automation, 1201 South Second Street, Milwaukee, WI 53204-2496 USA, Tel: (1) 414.382.2000, Fax: (1) 414.382.4444
Europe/Middle East/Africa: Rockwell Automation, Vorstlaan/Boulevard du Souverain 36, 1170 Brussels, Belgium, Tel: (32) 2 663 0600, Fax: (32) 2 663 0640
Asia Pacific: Rockwell Automation, Level 14, Core F, Cyberport 3, 100 Cyberport Road, Hong Kong, Tel: (852) 2887 4788, Fax: (852) 2508 1846

Publication 1756-RN630A-EN-P - February 2008

PN 953030-05

Copyright © 2008 Rockwell Automation, Inc. All rights reserved. Printed in the U.S.A.