
FactoryTalk[®] Historian ME

FactoryTalk Historian Machine Edition (ME)

ControlFLASH Upgrade Guide, Release 2.1

1756-HIST1G, 1756-HIST2G

About This Publication

This document provides information about how to flash (or upgrade) your FactoryTalk Historian ME module firmware using the ControlFLASH firmware kit, version 7.00.09.

| Flash Upgrade | Description | Installation File |
|--|--|---|
| From a Previous Firmware Version to a New Firmware Version | Installs updated binary files. Deletes all log files. Preserves: <ul style="list-style-type: none">• Module configuration data• Archive files | ControlFLASH.msi (contained in 1756HIST_02_10_10_xxx.zip, where xxx is the build number) |

Sections in this guide include:

- Before You Begin on page 2
- Locate the Firmware on page 3
- Install the ControlFLASH Software on page 4
- Perform the Firmware Upgrade on page 6
- Updates and Application Notes on page 12
- Additional Resources on page 12

Before You Begin

This section includes:

- Best Practice Suggestion on page 2
- Upgrade Prerequisites on page 2

Best Practice Suggestion

As a best practice, we suggest that you back up your module configuration and download the backup configuration file to your client computer before performing an upgrade. Click Configure Historian > Backup and Restore to perform a backup. Press [Backup] to back up the module configuration. Click [Download] to save the backup file to your client computer.

Upgrade Prerequisites

To flash the module firmware you must have at least RSLinx Classic software installed. In addition, you must do the following before upgrading:

- In the module web interface:
 - Stop Data Collection (Configure Historian > Data Collection) and Data Transfer (Configure Historian > Data Transfer).
- Go to the module’s Web Diagnostics web interface by opening a web browser and entering `http://<ModuleIP_address>:8080`.
 - Record the firmware version number from the Home page.

| Module Information | Current Version Number |
|--------------------|------------------------|
| Firmware Version | |

- Click Firmware > Logs Download. Package and download all log file.

Logs Download

| | |
|---------------------------|-----|
| Existed Packaged Log File | N/A |
| Package Time | N/A |
| Size | N/A |

Package Logs

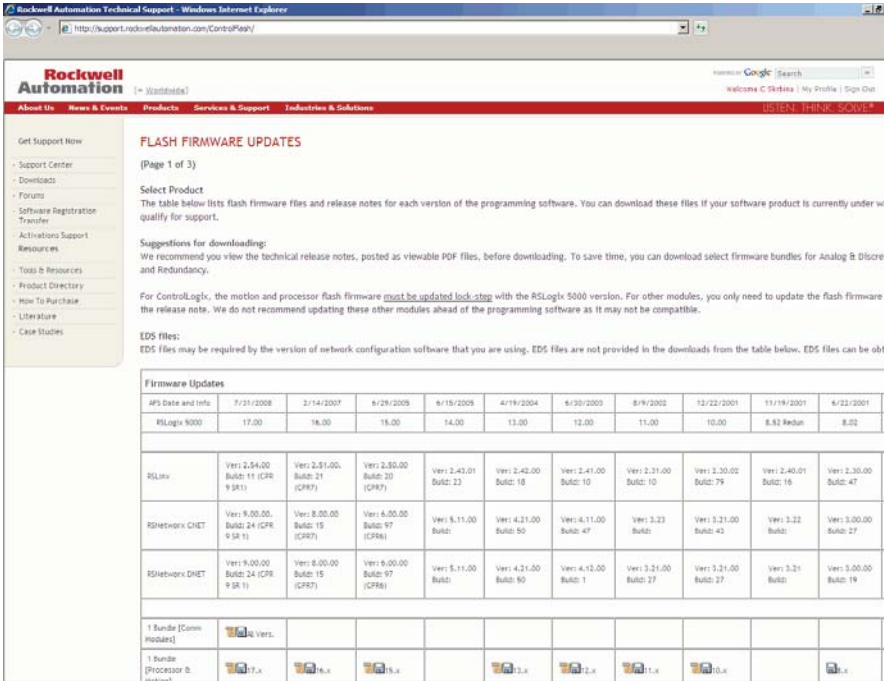
Download Packaged Log File Delete Packaged Log File

- Identify the network path across the backplane in the local chassis from the network module to FactoryTalk Historian ME as defined in RSLinx Classic. This is not the path through the front port of the module. To view the network path across the backplane, see the image in step 4 on page 8.
- Log out and disconnect all clients (including web clients).

Locate the Firmware

The firmware bundle is located on the Rockwell web site.

1. Go to the Flash Firmware Updates site at <http://support.rockwellautomation.com/ControlFlash/>. The Flash Firmware Updates page displays:

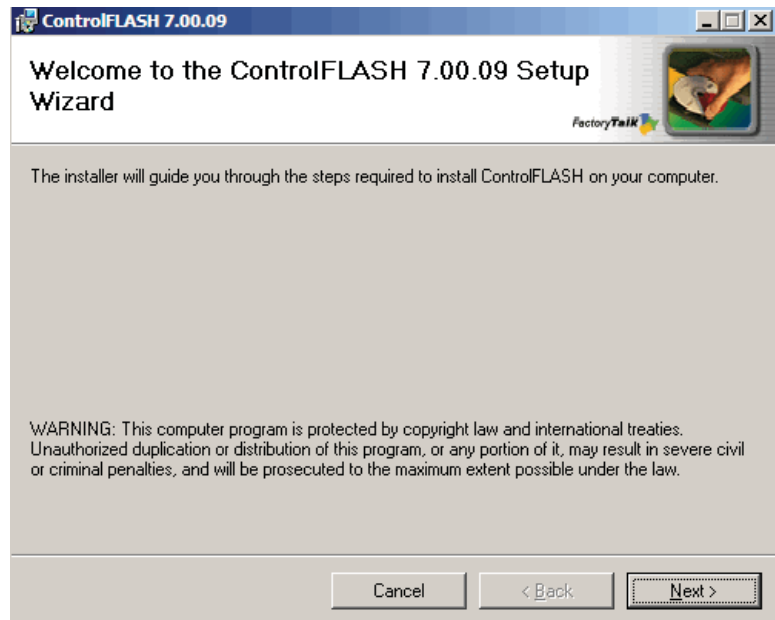


2. Scroll down to locate the firmware bundle for FactoryTalk Historian ME (1756-HIST1G or 1756-HIST2G), and click on the disk icon.

Install the ControlFLASH Software

After completing the preparation described in the *Before You Begin* section, follow these steps to install the ControlFLASH software.

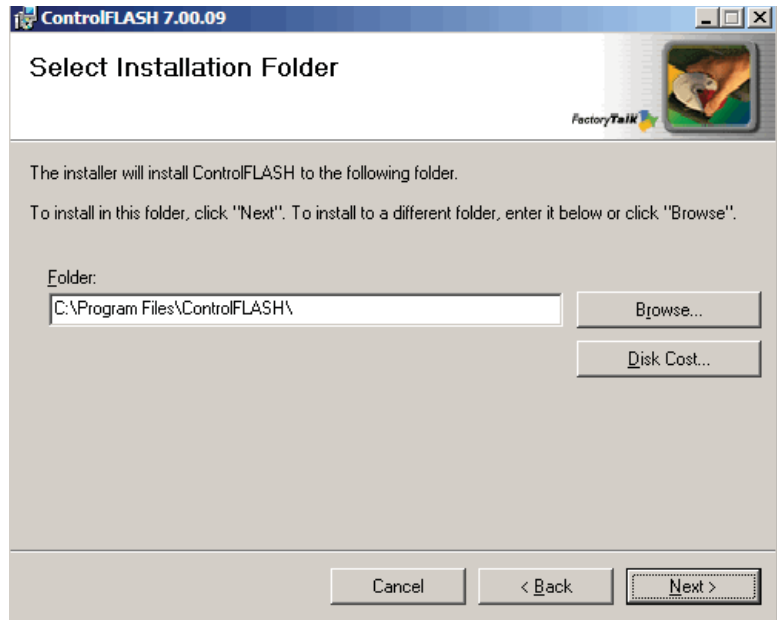
1. Locate the 1756HIST_02_10_10_xxx.zip file (where xxx is the build number) and unzip it.
2. To run the ControlFLASH Setup Wizard, select the ControlFLASH.msi file.
3. At the Welcome to ControlFLASH setup screen, click [Next].



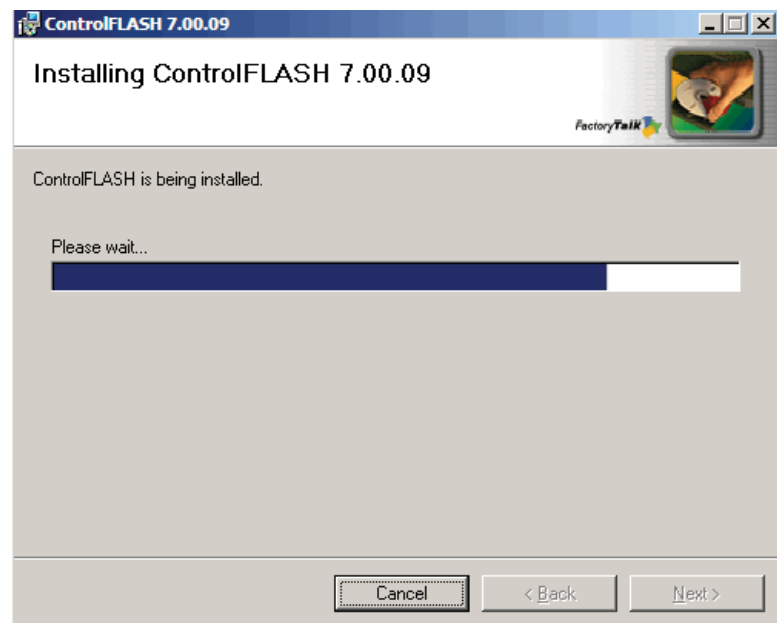
4. Select "I Agree" and click [Next] to accept the license agreement.



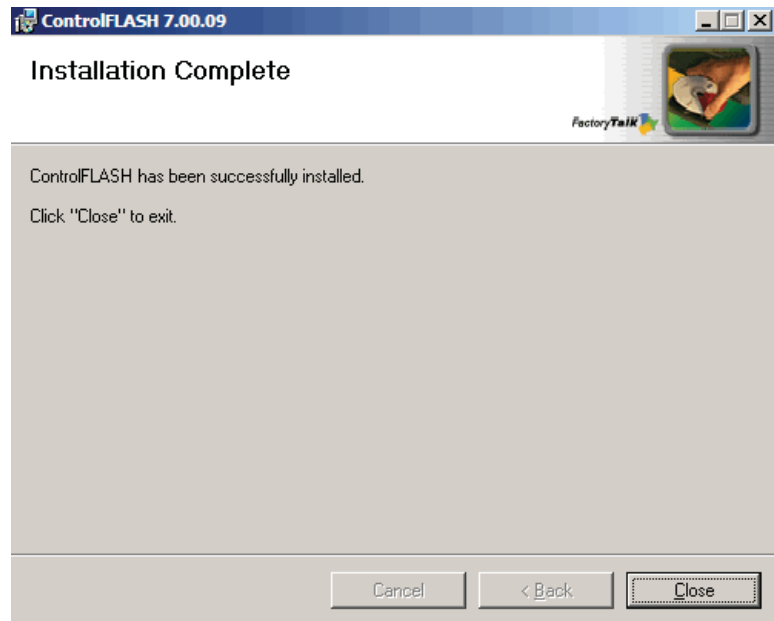
5. Enter a path, browse to a folder, or click [Next] to accept the default location.



6. Click [Next] to start the installation. A status bar will display the installation progress.



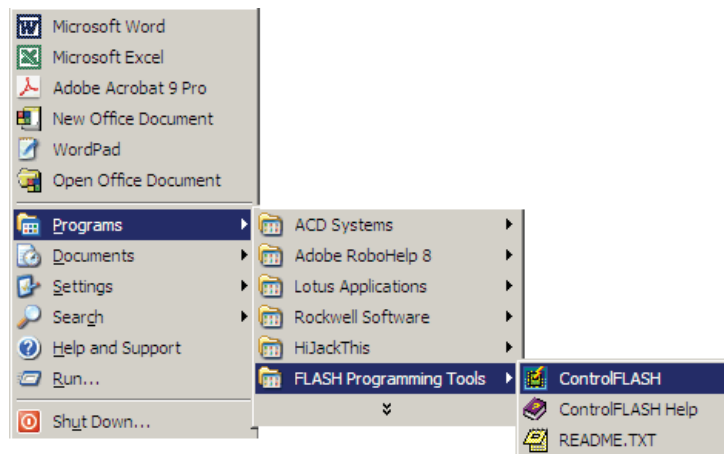
7. At the Installation Complete screen, click [Close] to exit.



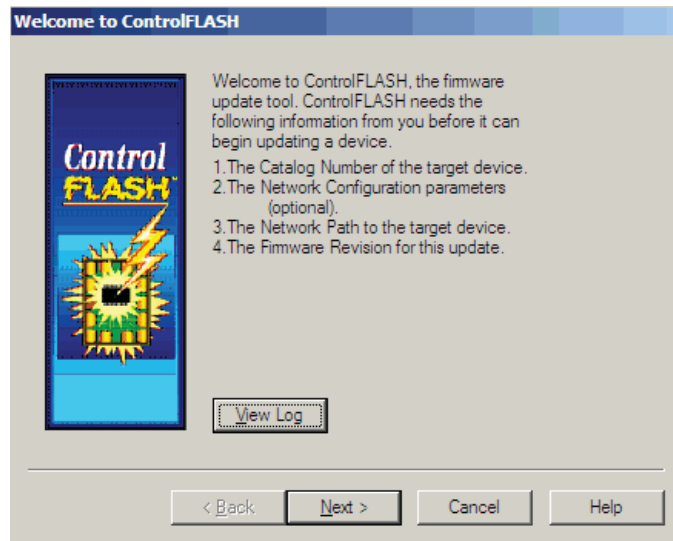
Perform the Firmware Upgrade

After completing the preparation described in the *Before You Begin* section, follow these steps to perform the firmware installation.

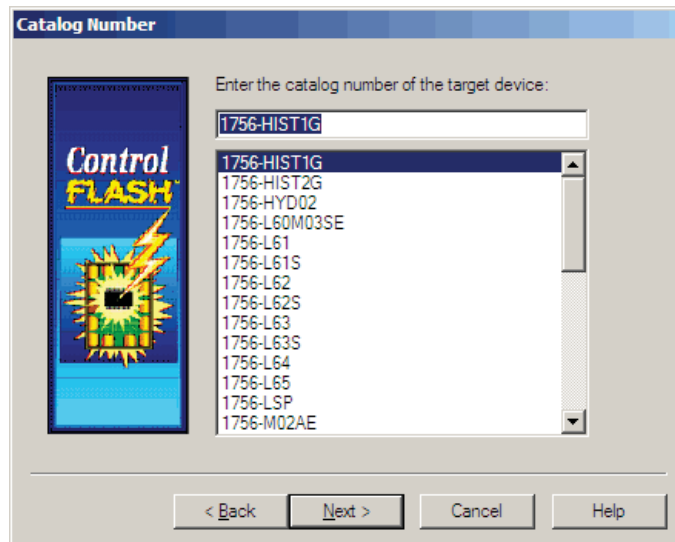
1. Launch the ControlFLASH software. From the Windows Start menu, select Programs > FLASH Programming Tools > ControlFLASH.



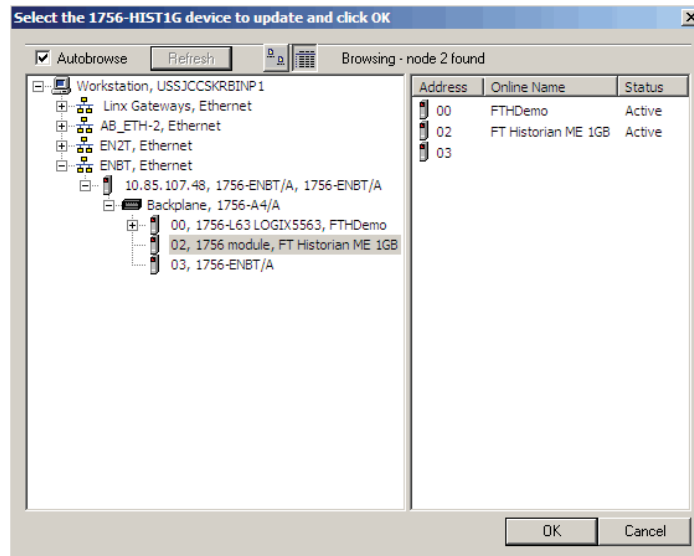
2. At the Welcome to ControlFLASH dialog box, ensure that you have the required information, and click [Next].



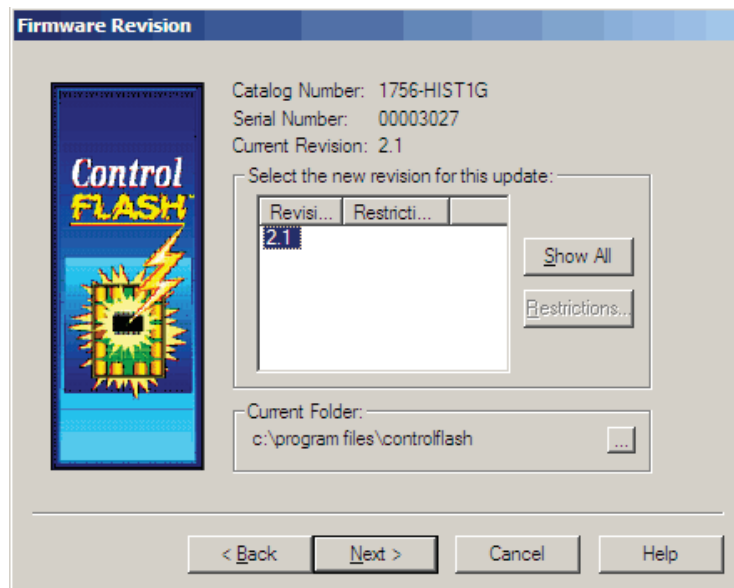
3. In the Catalog Number dialog box, select 1756-HIST1G or 1756-HIST2G (depending on your module type) and click [Next].



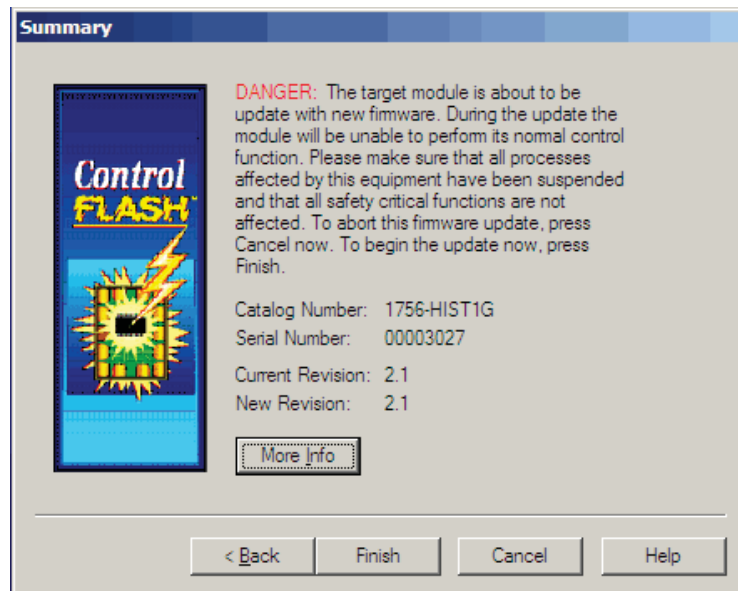
- Browse to the device that you want to upgrade. Select the device and click [OK].



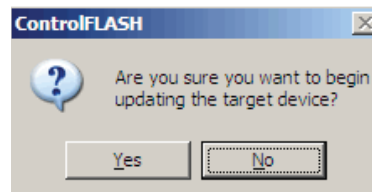
- In the Firmware Revision dialog box, select the firmware revision number and click [Next].



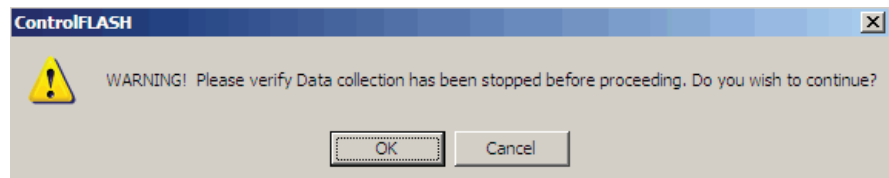
- In the Summary dialog box, read the DANGER! information, and click [Finish] to upgrade your module. Click [More Info] to read more about the revision you select.



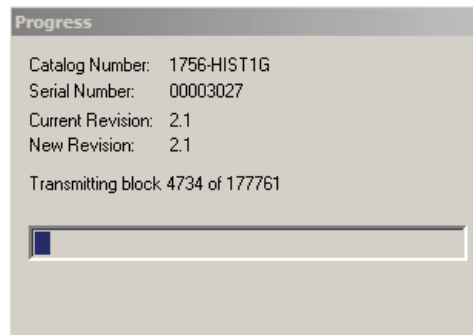
- A ControlFLASH popup box displays asking for confirmation to update the target device. Click [Yes] to proceed.



- A ControlFLASH popup box displays reminding you to verify that Data Collection has been stopped on your module. Click [OK] to proceed.

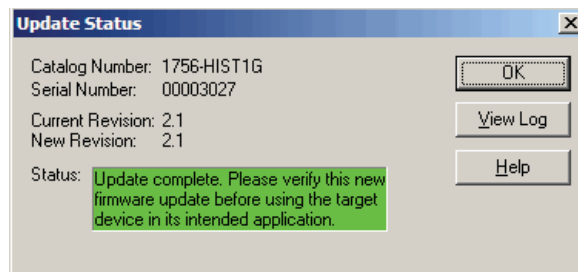


A Progress screen will display.

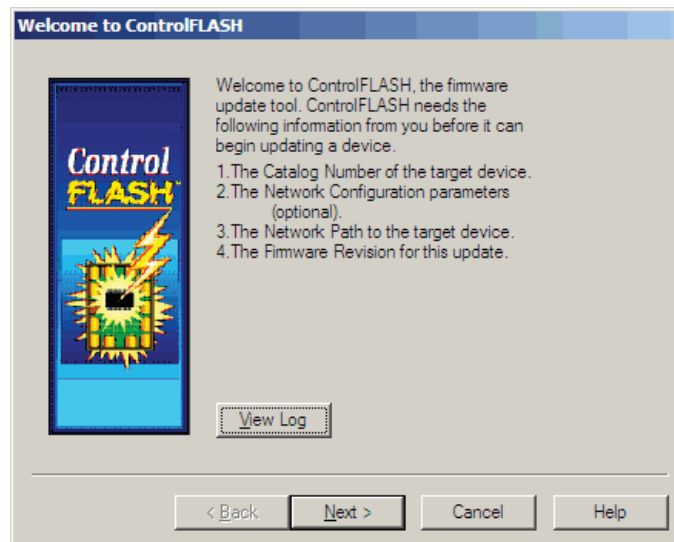


The firmware upgrade may take 20 minutes or more to complete. After the upgrade is complete, the Update Status dialog box opens.

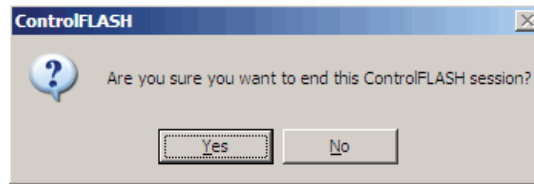
If the upgrade is successful, the Status box is green. If it is unsuccessful, it is red. Retry the upgrade procedures until the Status box is green. If it is still unsuccessful after several attempts, contact Rockwell Technical Support.



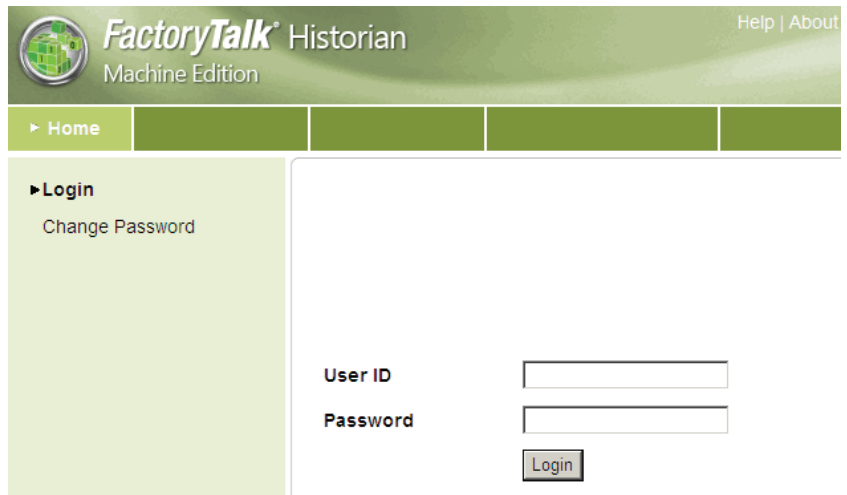
9. Click [OK]. The Welcome window opens again. Click [View Log] if you want to read a history of programming events.
10. Click [Cancel] to end the session.



11. A ControlFLASH popup box displays confirming that you want to end this flash upgrade session. Click [Yes] to complete the installation.



12. Go to the module's web interface and click the About link in the upper right-hand corner of the Home page.



The About page contains the firmware version number for you to verify.



Version: 02.10.10.0326

Product ID: 1756-HIST

Copyright © 2010 Rockwell Automation Technologies, Inc.
All Rights Reserved.

Rockwell Automation

Rockwell Automation and the Rockwell Automation logo are trademarks of Rockwell Automation, Inc.

All other brand or product names are trademarks or registered trademarks of their respective companies. Please refer to the FactoryTalk Historian ME Release Notes for open source statements.



The firmware upgrade preserved all user configuration settings. To restore the module to its factory settings, go to Advanced > Restore Defaults or use the Add-on Profile (AOP) in RSLogix 5000.

Updates and Application Notes

Rockwell Automation provides technical information on the web to assist you in using its products. Refer to our extensive online knowledgebase for the most current information about FactoryTalk Historian ME. Visit <http://www.rockwellautomation.com/resources/support.html> and select the Knowledgebase link to:

- View technical and application notes.
- Obtain software patches and firmware updates.
- Subscribe to product and service e-mail notifications.
- Ask questions.

For an additional level of technical phone support for installation, configuration, and troubleshooting, we offer TechConnect support programs. For more information, contact your local distributor or Rockwell Automation representative, or visit <http://www.rockwellautomation.com/support/>.

Additional Resources

These documents contain additional information for FactoryTalk Historian ME. You can view or download publications from the Client Tools CD-ROM shipped with your FactoryTalk Historian ME module.

Note: Please see the *FactoryTalk Historian ME User's Guide* for the most up-to-date information.

| Publication | Description |
|--|--|
| <i>ControlFLASH Firmware Upgrade Kit Quick Start Guide</i> (1756-QS105C-EN-E) | Provides detailed information about the firmware upgrade kit. |
| <i>FactoryTalk Historian ME Release Notes</i> (1756-RN611A-EN-E) | Describes the FactoryTalk Historian ME known anomalies. |
| <i>FactoryTalk Historian User's Guide</i> (1756-UM611A-EN-E) | Explains how to configure, administer, and use your FactoryTalk Historian ME features. This manual includes a detailed chapter on web diagnostics as well as sample scenarios for data transfer and FactoryTalk Directory integration. |
| <i>FactoryTalk Historian ME Quick Start Guide</i> (1756-QS611A-EN-P) | Describes how to quickly install and configure FactoryTalk Historian ME so that users can start collecting and viewing data without having to configure all features. The quick start guide is provided as a printed manual. |
| <i>FactoryTalk Historian ME Installation Instructions</i> (1756-IN611A-EN-P) | Explains how to install FactoryTalk Historian ME. It also includes environmental testing and certification information. The installation guide is provided as a printed manual. |

| Publication | Description |
|--|--|
| <i>FactoryTalk Historian ME Online Help</i> | Describes the FactoryTalk Historian ME web interface in detail. Access the help files by clicking the <i>About...</i> links in the left-side navigation bar of the individual web interface pages and by clicking the main <i>Help</i> link located in the upper right-hand corner of the web interface. |
| <i>FactoryTalk Historian ME Web Diagnostics Help</i> | Describes the FactoryTalk Historian ME Web Diagnostics interface, which displays information on the product's firmware applications and hardware components. Access the help files by clicking the main <i>Help</i> link located in the upper right-hand corner of the Web Diagnostics interface. |
| <i>FactoryTalk Historian ME Client Tools Release Notes</i> | Describes the items shipped on your FactoryTalk Historian ME Client Tools CD. Access this help by clicking Open Release Notes on the Client Tools welcome page. |

Allen-Bradley, Rockwell Software, Rockwell Automation, FactoryTalk and TechConnect are trademarks of Rockwell Automation, Inc. Trademarks not belonging to Rockwell Automation are property of their respective companies.

www.rockwellautomation.com

Power, Control, and Information Solutions Headquarters

Americas: Rockwell Automation, 1201 South Second Street, Milwaukee, WI 53204-2496 USA, Tel: (1) 414 382 4444, Fax: (1) 414 382 4444
Europe/Middle East/Africa: Rockwell Automation, Vorstlaan/Boulevard du Souverain 36, 1170 Brussels, Belgium, Tel: (32) 2 663 0600, Fax: (32) 2 663 0640
Asia Pacific: Rockwell Automation, Level 14, Core F, Cyberport 3, 100 Cyberport Road, Hong Kong, Tel: (852) 2887 4788, Fax: (852) 2508 1846

Publication Number: 1756-QR611A-EN-E

Copyright © 2010 Rockwell Automation, Inc. All rights reserved.